

# GET DAYLIGHT AT NIGHT WITH RAZORLUX

Revolutionary  
LED floodlights



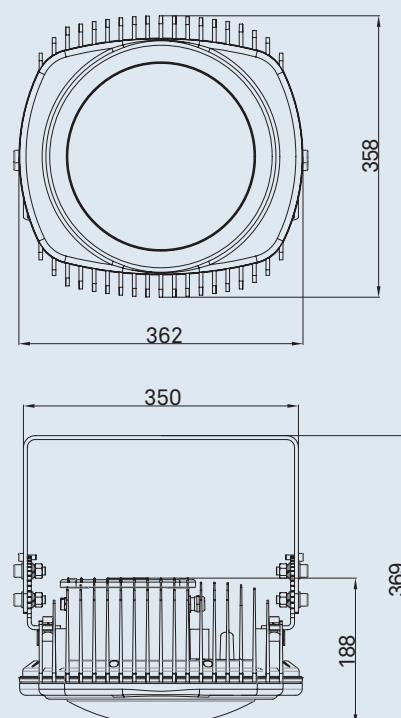


# RGLM-90A

90W



Model:	RGLM-90A
Power Consumption LED:	81W
Power Consumption Driver:	9W
Total:	90W
Initial Lumen Flux:	10800lm
Beam angle:	60°/120°
Net Weight:	8kg
Color Temperature:	6000 K
Color Rendering:	≥Ra80
Working Life:	≥50000Hrs
Housing:	Aluminum
IP Class:	IP67
Working Temperature:	-40C~60C/40F~140F
AC Input Voltage:	AC80-360V
Power Factor:	≥0.98
Warranty:	5 years

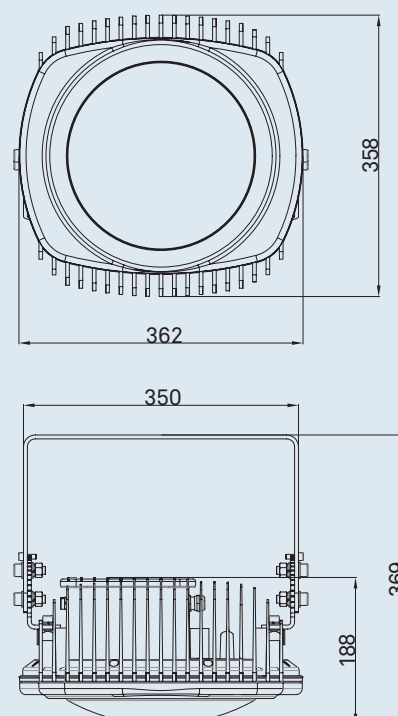


# RGLM-180A

180W

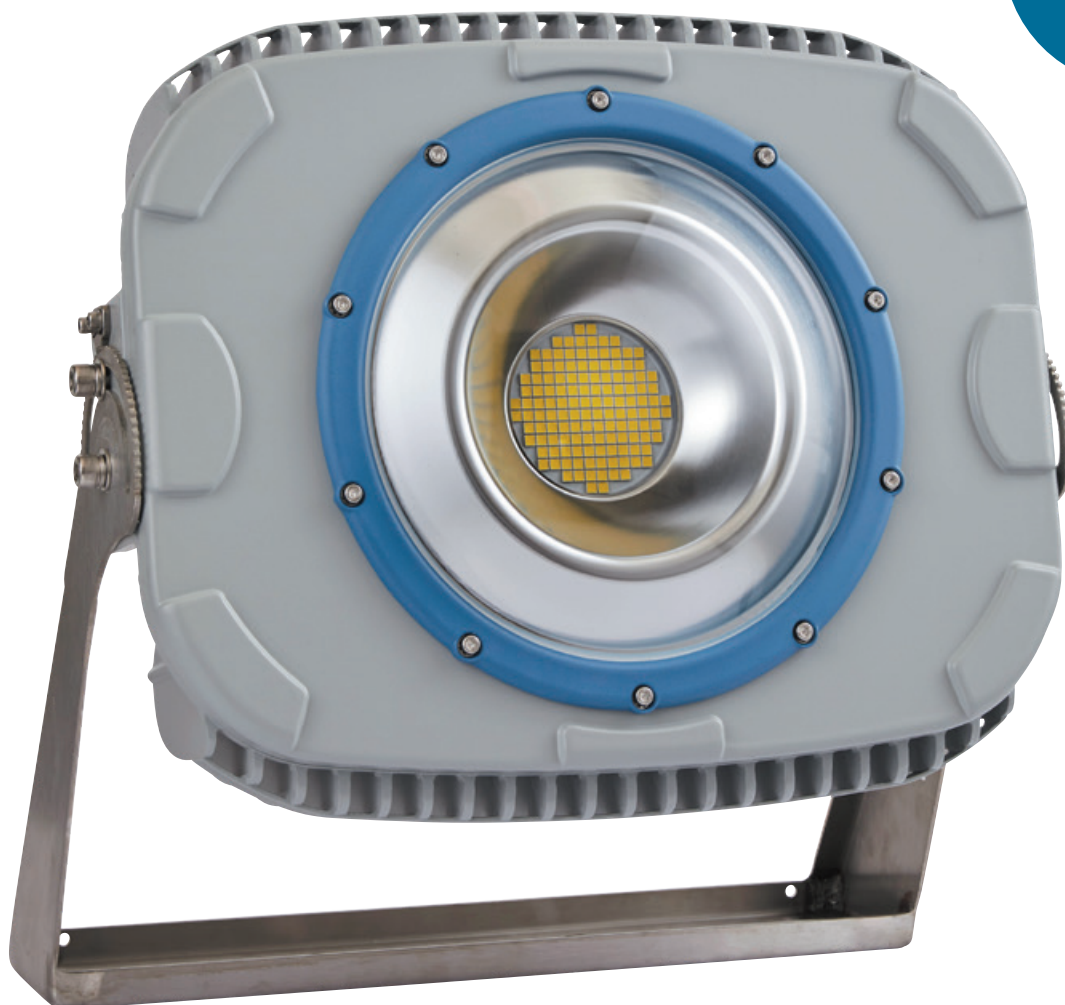


Model:	RGLM-180A
Power Consumption LED:	165W
Power Consumption Driver:	15W
Total:	180W
Initial Lumen Flux:	21600lm
Beam angle:	60°
Net Weight:	8kg
Color Temperature:	6000 K
Color Rendering:	≥Ra80
Working Life:	≥50000Hrs
Housing:	Aluminum
IP Class:	IP67
Working Temperature:	-40C~60C/40F~140F
AC Input Voltage:	AC80-360V
Power Factor:	≥0.98
Warranty:	5 years

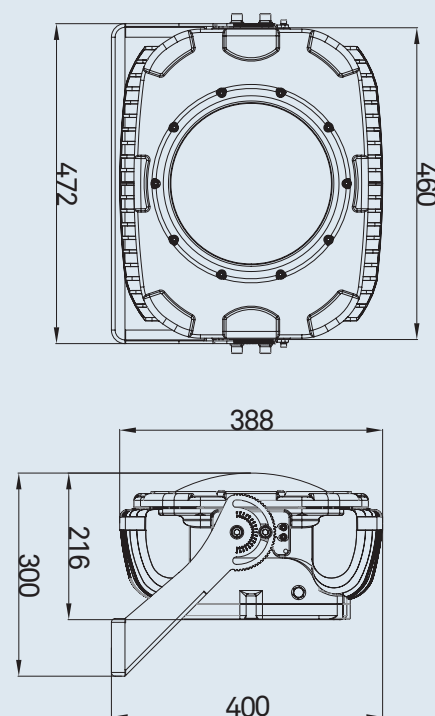


# RGLM-200A

200W

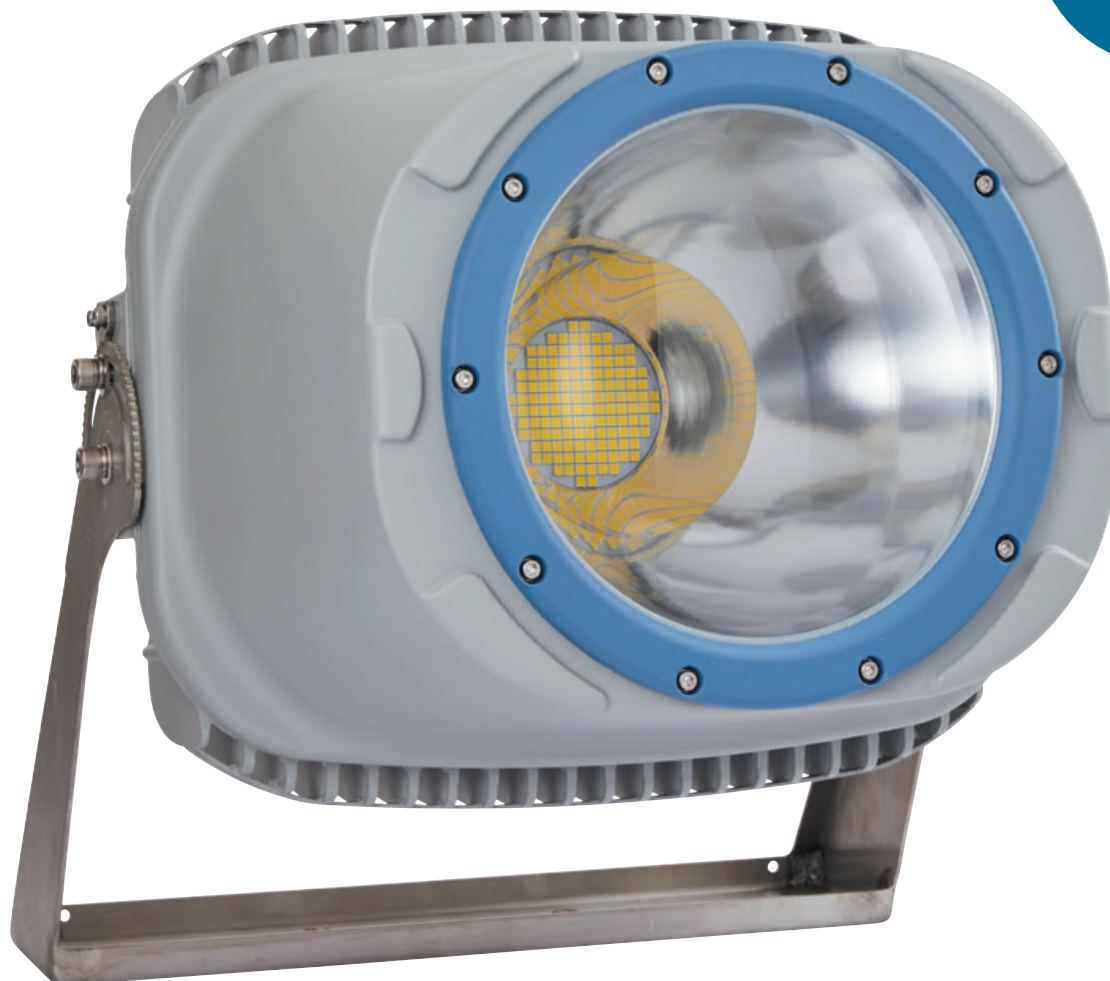


Model:	RGLM-200A
Power Consumption LED:	180W
Power Consumption Driver:	20W
Total:	200W
Initial Lumen Flux:	24000lm
Beam angle:	60°
Net Weight:	15kg
Color Temperature:	6000 K
Color Rendering:	≥Ra80
Working Life:	≥50000Hrs
Housing:	Aluminum
IP Class:	IP67
Working Temperature:	-40C~60C/40F~140F
AC Input Voltage:	AC80-360V
Power Factor:	≥0.98
Warranty:	5 years

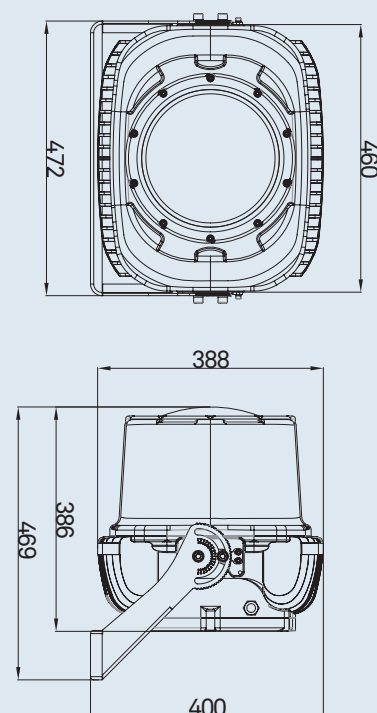


# RGLM-200P

200W



Model:	RGLM-200P
Power Consumption LED:	180W
Power Consumption Driver:	20W
Total:	200W
Initial Lumen Flux:	24000lm
Beam angle:	20°
Net Weight:	19kg
Color Temperature:	6000 K
Color Rendering:	≥Ra80
Working Life:	≥50000Hrs
Housing:	Aluminum
IP Class:	IP67
Working Temperature:	-40C~60C/40F~140F
AC Input Voltage:	AC80-360V
Power Factor:	≥0.98
Warranty:	5 years



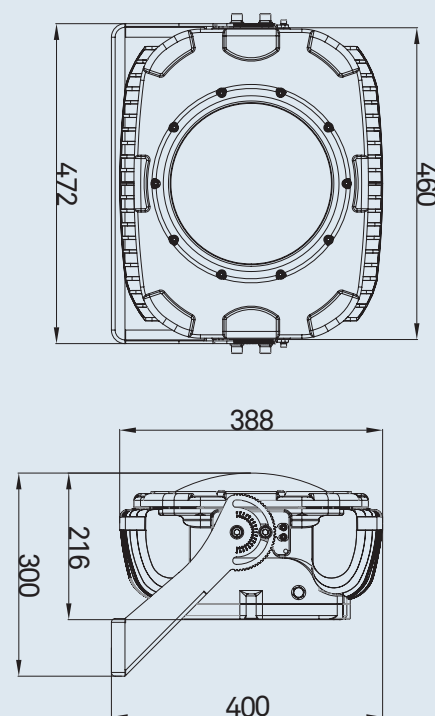


# RGLM-300A

300W

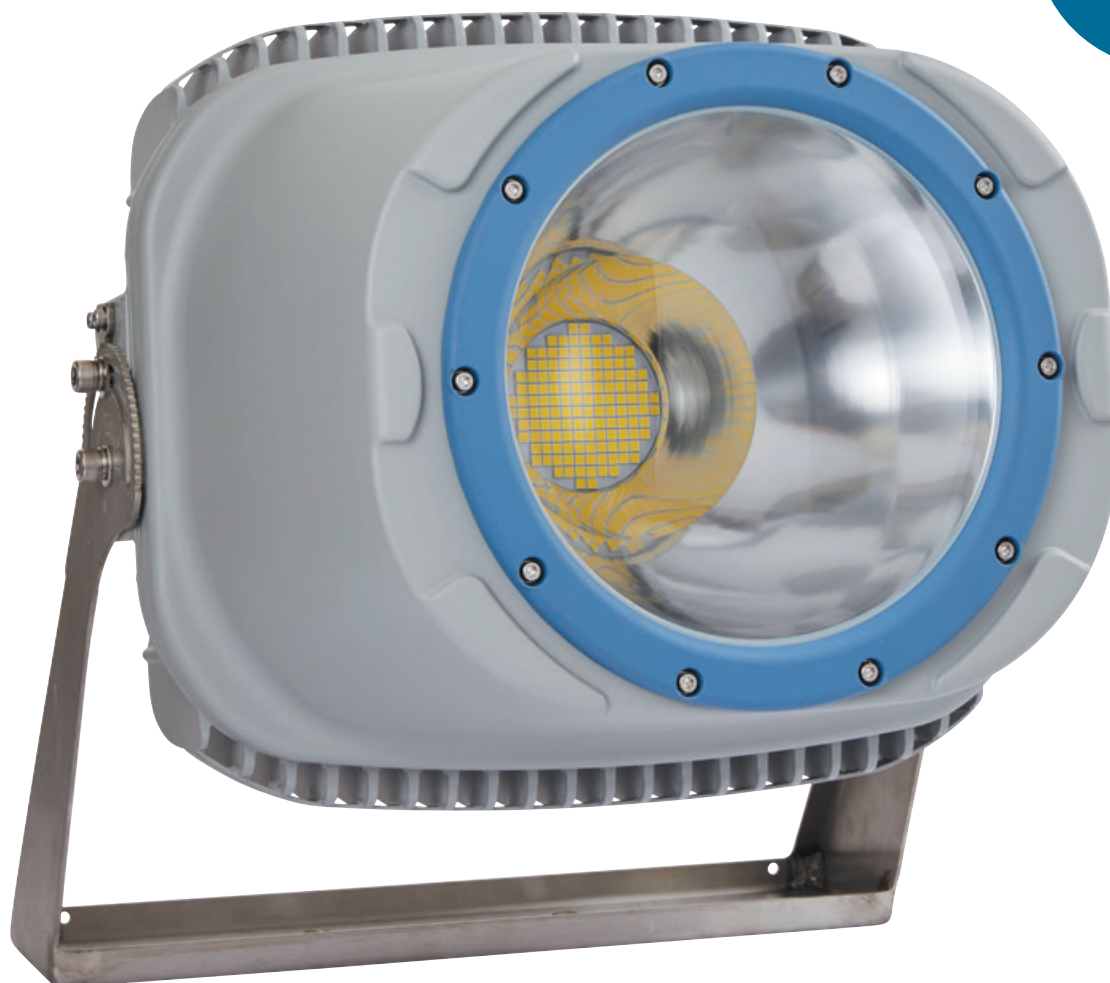


Model:	RGLM-300A
Power Consumption LED:	270W
Power Consumption Driver:	30W
Total:	300W
Initial Lumen Flux:	39000lm
Beam angle:	60°
Net Weight:	15kg
Color Temperature:	6000 K
Color Rendering:	≥Ra80
Working Life:	≥50000Hrs
Housing:	Aluminum
IP Class:	IP67
Working Temperature:	-40C~60C/40F~140F
AC Input Voltage:	AC80-360V
Power Factor:	≥0.98
Warranty:	5 years

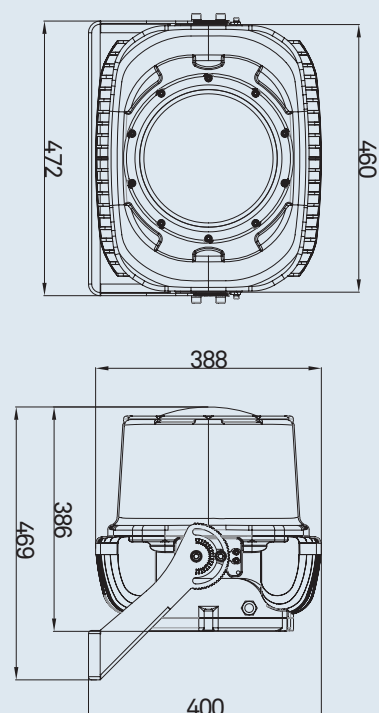


# RGLM-300P

300W

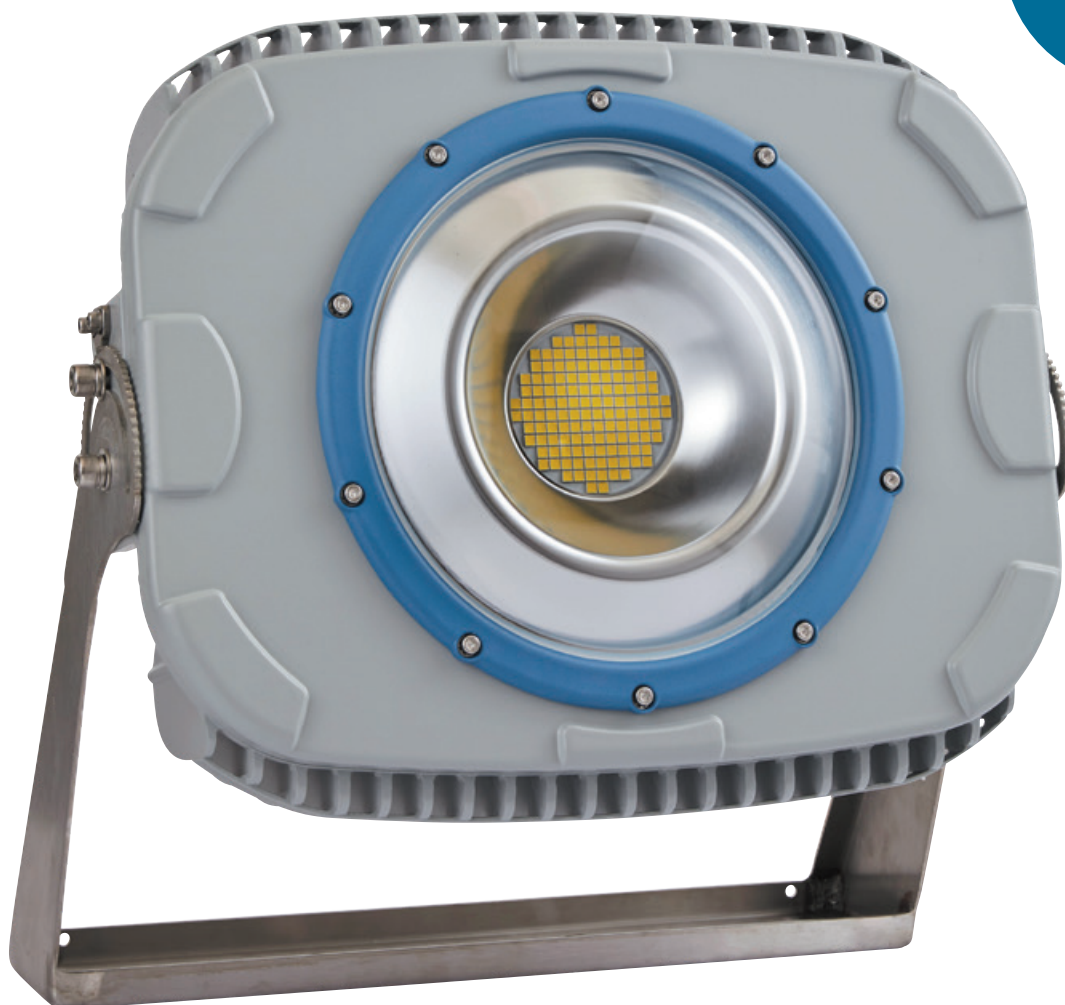


Model:	RGLM-300P
Power Consumption LED:	270W
Power Consumption Driver:	30W
Total:	300W
Initial Lumen Flux:	39000lm
Beam angle:	20°
Net Weight:	19kg
Color Temperature:	6000 K
Color Rendering:	≥Ra80
Working Life:	≥50000Hrs
Housing:	Aluminum
IP Class:	IP67
Working Temperature:	-40C~60C/40F~140F
AC Input Voltage:	AC80-360V
Power Factor:	≥0.98
Warranty:	5 years

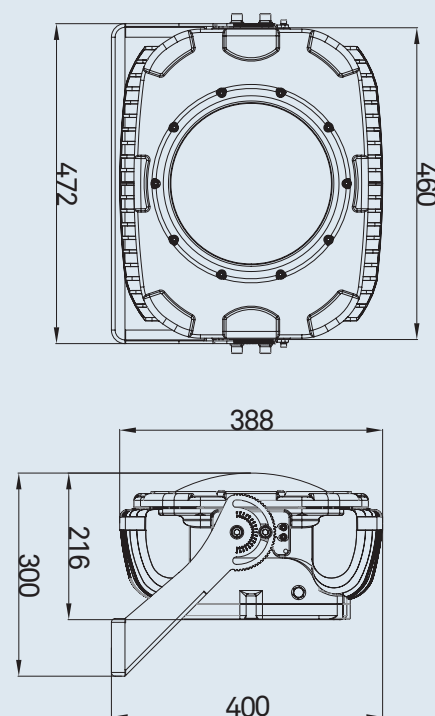


# RGLM-400A

400W



Model:	RGLM-400A
Power Consumption LED:	360W
Power Consumption Driver:	40W
Total:	400W
Initial Lumen Flux:	48000lm
Beam angle:	60°
Net Weight:	15kg
Color Temperature:	6000 K
Color Rendering:	≥Ra80
Working Life:	≥50000Hrs
Housing:	Aluminum
IP Class:	IP67
Working Temperature:	-40C~60C/40F~140F
AC Input Voltage:	AC80-360V
Power Factor:	≥0.98
Warranty:	5 years



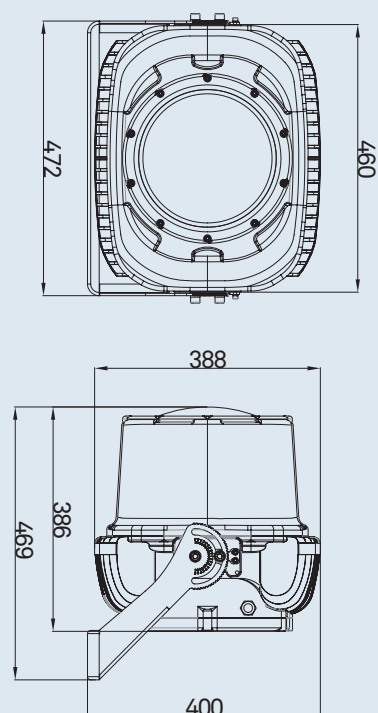


# RGLM-400P

400W

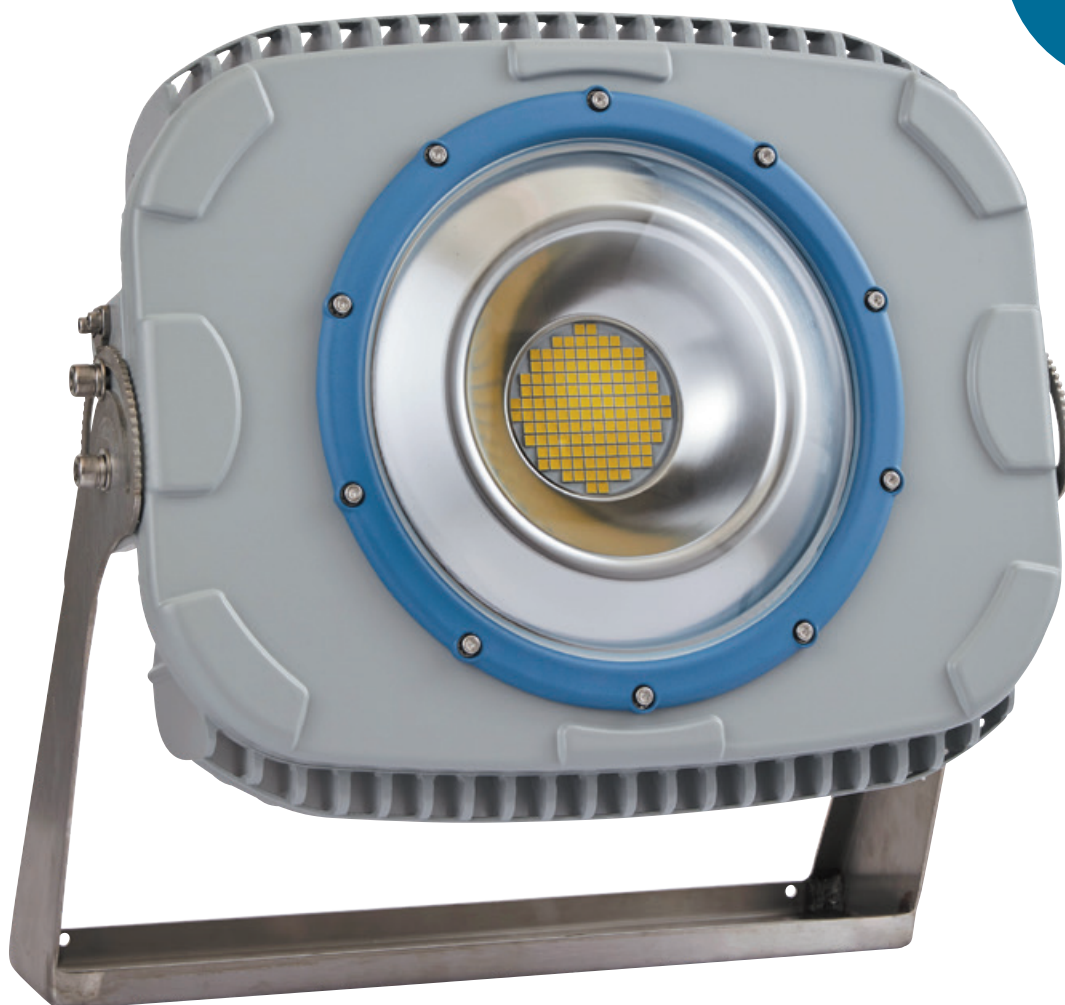


Model:	RGLM-400P
Power Consumption LED:	360W
Power Consumption Driver:	40W
Total:	400W
Initial Lumen Flux:	48000lm
Beam angle:	20°
Net Weight:	19kg
Color Temperature:	6000 K
Color Rendering:	≥Ra80
Working Life:	≥50000Hrs
Housing:	Aluminum
IP Class:	IP67
Working Temperature:	-40C~60C/40F~140F
AC Input Voltage:	AC80-360V
Power Factor:	≥0.98
Warranty:	5 years

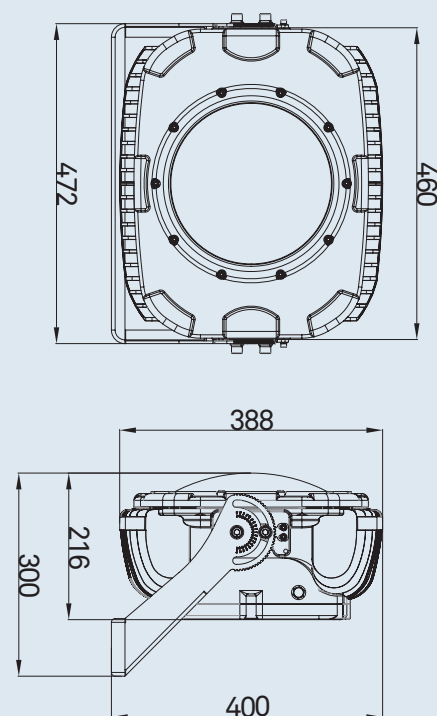


# RGLM-500A

500W



Model:	RGLM-500A
Power Consumption LED:	450W
Power Consumption Driver:	50W
Total:	500W
Initial Lumen Flux:	60000lm
Beam angle:	60°
Net Weight:	15kg
Color Temperature:	6000 K
Color Rendering:	≥Ra80
Working Life:	≥50000Hrs
Housing:	Aluminum
IP Class:	IP67
Working Temperature:	-40C~60C/40F~140F
AC Input Voltage:	AC80-360V
Power Factor:	≥0.98
Warranty:	5 years

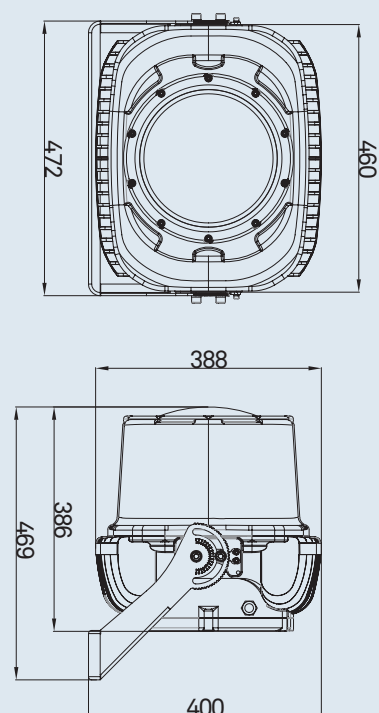


# RGLM-500P

500W



Model:	RGLM-500P
Power Consumption LED:	450W
Power Consumption Driver:	50W
Total:	500W
Initial Lumen Flux:	60000lm
Beam angle:	20°
Net Weight:	19kg
Color Temperature:	6000 K
Color Rendering:	≥Ra80
Working Life:	≥50000Hrs
Housing:	Aluminum
IP Class:	IP67
Working Temperature:	-40C~60C/40F~140F
AC Input Voltage:	AC80-360V
Power Factor:	≥0.98
Warranty:	5 years



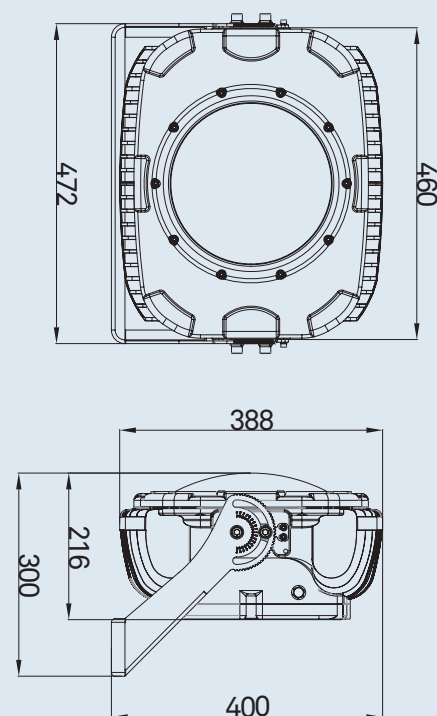


# RGLM-600A

600W



Model:	RGLM-600A
Power Consumption LED:	540W
Power Consumption Driver:	60W
Total:	600W
Initial Lumen Flux:	72000lm
Beam angle:	60°
Net Weight:	15kg
Color Temperature:	6000 K
Color Rendering:	≥Ra80
Working Life:	≥50000Hrs
Housing:	Aluminum
IP Class:	IP67
Working Temperature:	-40C~60C/40F~140F
AC Input Voltage:	AC80-360V
Power Factor:	≥0.98
Warranty:	5 years

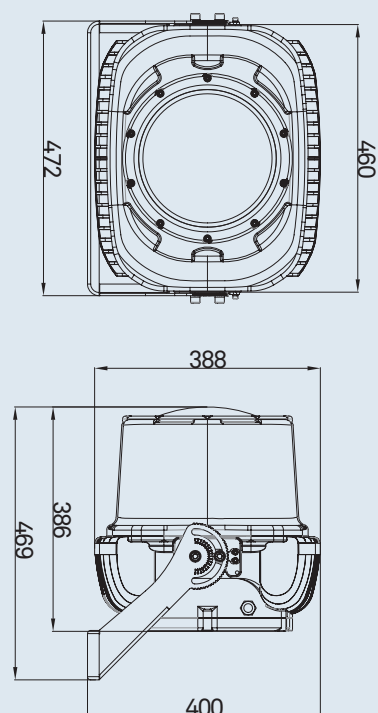


# RGLM-600P

600W



Model:	RGLM-600P
Power Consumption LED:	540W
Power Consumption Driver:	60W
Total:	600W
Initial Lumen Flux:	72000lm
Beam angle:	20°
Net Weight:	19kg
Color Temperature:	6000 K
Color Rendering:	≥Ra80
Working Life:	≥50000Hrs
Housing:	Aluminum
IP Class:	IP67
Working Temperature:	-40C~60C/40F~140F
AC Input Voltage:	AC80-360V
Power Factor:	≥0.98
Warranty:	5 years



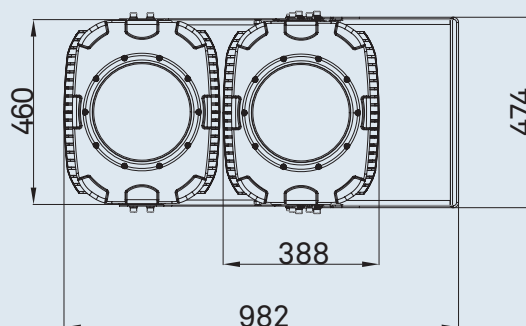
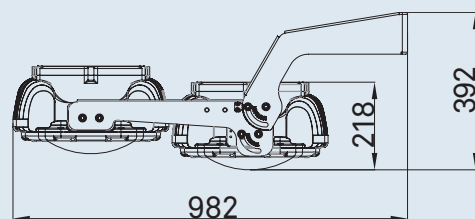
# RGLM-1000A

1000W



Eksempel med bracket

Model:	RGLM-1000A
Power Consumption LED:	900W
Power Consumption Driver:	100W
Total:	1000W
Initial Lumen Flux:	120000lm
Beam angle:	60°
Net Weight:	30kg
Color Temperature:	6000 K
Color Rendering:	≥Ra80
Working Life:	≥50000Hrs
Housing:	Aluminum
IP Class:	IP67
Working Temperature:	-40C~60C/40F~140F
AC Input Voltage:	AC80-360V
Power Factor:	≥0.98
Warranty:	5 years





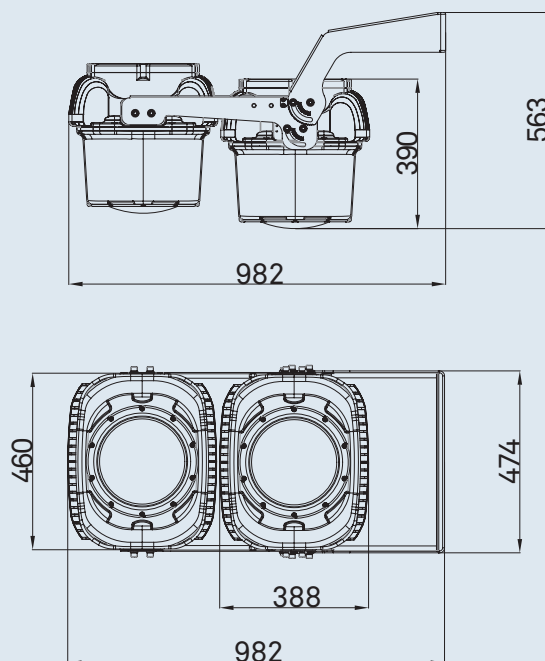
# RGLM-1000P

1000W



Eksempel med bracket

Model:	RGLM-1000P
Power Consumption LED:	900W
Power Consumption Driver:	100W
Total:	1000W
Initial Lumen Flux:	120000lm
Beam angle:	20°
Net Weight:	30kg
Color Temperature:	6000 K
Color Rendering:	≥Ra80
Working Life:	≥50000Hrs
Housing:	Aluminum
IP Class:	IP67
Working Temperature:	-40C~60C/40F~140F
AC Input Voltage:	AC80-360V
Power Factor:	≥0.98
Warranty:	5 year



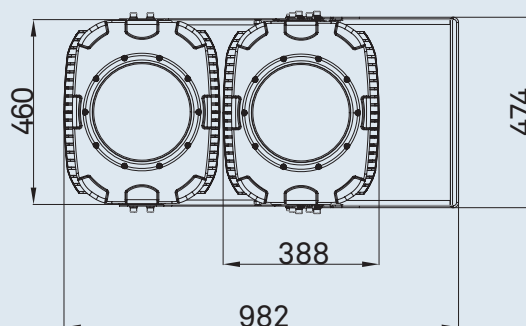
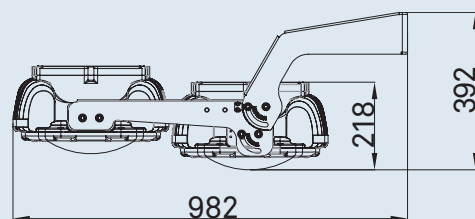
# RGLM-1200A

1200W



Eksempel med bracket

Model:	RGLM-1200A
Power Consumption LED:	1080W
Power Consumption Driver:	120W
Total:	1200W
Initial Lumen Flux:	144000lm
Beam angle:	60°
Net Weight:	30kg
Color Temperature:	6000 K
Color Rendering:	≥Ra80
Working Life:	≥50000Hrs
Housing:	Aluminum
IP Class:	IP67
Working Temperature:	-40C~60C/40F~140F
AC Input Voltage:	AC80-360V
Power Factor:	≥0.98
Warranty:	5 years



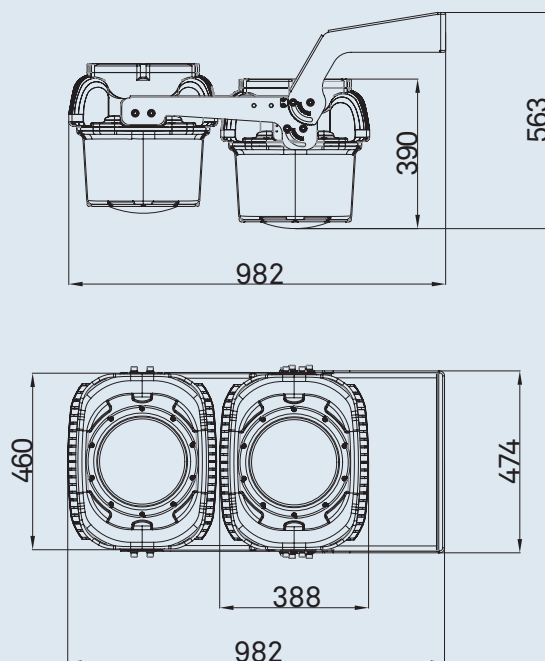
# RGLM-1200P

1200W



Eksempel med bracket

Model:	RGLM-1200P
Power Consumption LED:	1080W
Power Consumption Driver:	120W
Total:	1200W
Initial Lumen Flux:	144000lm
Beam angle:	20°
Net Weight:	30kg
Color Temperature:	6000 K
Color Rendering:	≥Ra80
Working Life:	≥50000Hrs
Housing:	Aluminum
IP Class:	IP67
Working Temperature:	-40C~60C/40F~140F
AC Input Voltage:	AC80-360V
Power Factor:	≥0.98
Warranty:	5 year





"My interest was on Razorlux when I saw an advertisement on facebook and could see they delivered brightness that were much more than those we had experienced. In use we found out that Razorlux not only shine more powerful, but also give more brightness than we had before and now we never have trouble seeing, if the trawls are unclear when we put them out at night."

**Rasmus Hald, Captain**  
Karbak HM 635



"Few years ago we bought 5 good Razorlux Maritime LED floodlights to be used on deck. The high and well distributed brightness is what we wanted. We recently placed an additional order and I expect to continue replacing all the deck."

**Mr. Eidur Petursson,**  
Chief Engineer Kristina



"After three years of use in the harsh environment in the Greenland Sea and Svalbard area the Razorlux LED floodlights have exceeded our expectations. In winds up to 40m pr. sec and frost down to -30°C it is important to be able to rely on the floodlights 24/7. Their high lumen output is something we haven't been used to but play a key role in making our work on deck easier and safer, if one can say so."

**Eiríkur Sigurdsson, Captain**  
Reval Viking EK 1202



"We are pleased with these LED lights from Razorlux. The high brightness they give provides an even light on the deck. Today there are hardly any shaded areas to be found."

**Jóel Thordarson, Captain**  
Guðmundur í Nesi RE 13





"Choosing Razorlux LED floodlights was a fantastic move. I haven't seen any lighting as massive before. Today me and my crew hardly notice if it is a day or night while working in the harsh enviroment. No glare from the lights is another bonus."

**Angantýr Arnar Árnason, Captain**  
Kaldbakur EA 1



"These Powerful LED floodlights increase safety on deck. Razorlux floodlights have set a new standard, my experience is that they have taken almost anything an ordinary light would not. Recently we have added the 1000W-20° at the bow and the 400W-20° at the stern with perfect results."



**Mr. Sigurjón Sigurbjörnsson**  
First Mate at Polar Amaroq



"The deck lighting is as good as it gets. We are pleased with the arrangement. The crew and equipment are highly visible at night and there are no shaded areas. Great brand."

**Mark Hartery, Captain**  
Newfoundland Victor (Canada)



"Recently we started upgrating our lighting on deck. The first batch of Razorlux floodlights has made a dramatic change that my crew love, now they are pushing for completion. We will only be using Razorluz LED floodlights from now on."

**Geiri Pétursson, Captain**  
Tai-An (Argentina)







Razorlux Maritim AS  
Asker, Norge  
Tel.: +47 9409 5555  
[www.razorlux.no](http://www.razorlux.no)